

## Wiki

### How to check the publishing Date of an Internet Service

Added by [Oisin ONidh](#) , last edited by [Oisin ONidh](#) on Feb 24, 2010 ([view change](#))

Labels: [its\\_howto](#), [its](#), [publish](#)

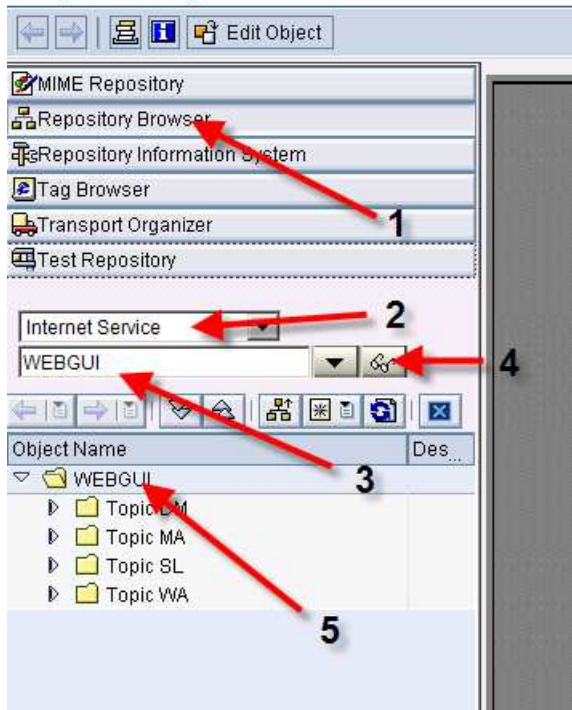
It is useful to know when an ITS Service was last published to the Integrated ITS; this is especially useful to know if Basis Support Packs have been applied to the WAS(Web Application Server). Then one can compare the ITS publishing information V's the importation information for the SAP\_BASIS Support Pack in transaction SPAM.

#### Solution

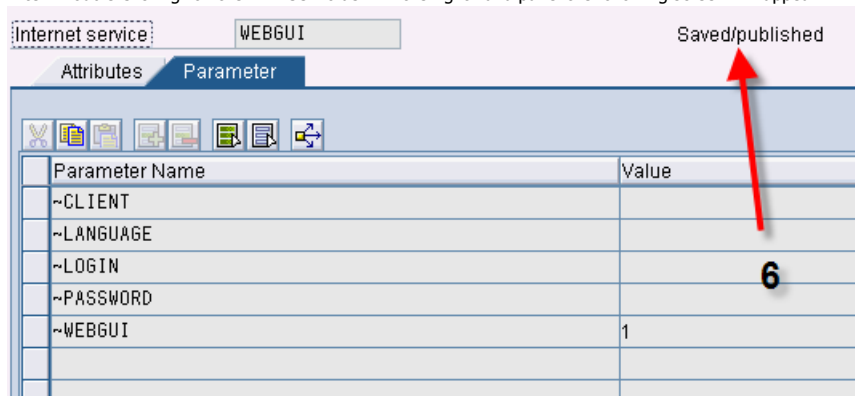
Here are the steps to check the publishing date for the well known ITS Service"WEBGUI". (The same method can be used for all ITS Services)

- In transaction SE80 under the Repository Browser (1)
- Select: Internet Service(2).
- Then type in WEBGUI(3) Hit "Enter" OR click on the "Spectacles Icon" (4)
- Then double click on the "WEBGUI" folder(5)

#### Object Navigator

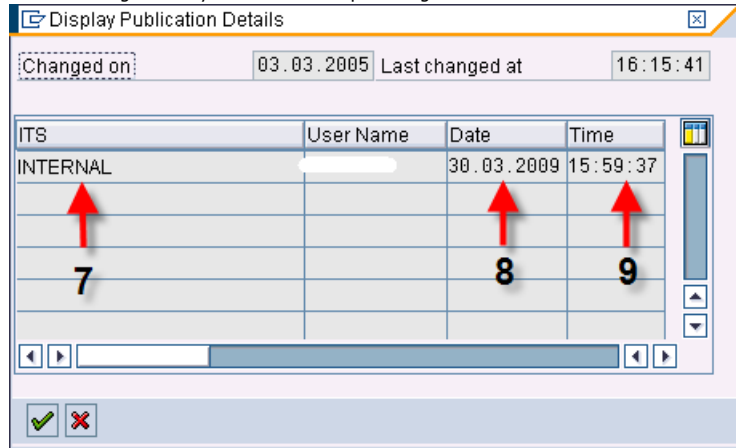


After "Double Clicking" on the WEBGUI folder - in the right hand panel the following screen will appear.



Then "Double Click" on the text "Saved" OR "Saved/Published". In this case it is "Saved/Published" (6).

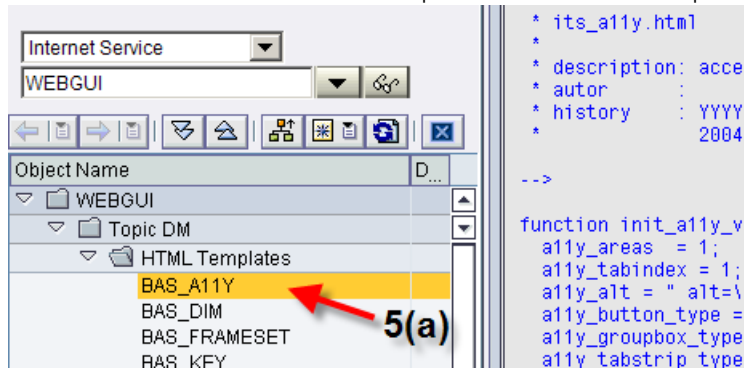
In the resulting POP-UP you will obtain the publishing information for the service WEBGUI to site INTERNAL/Integrated ITS



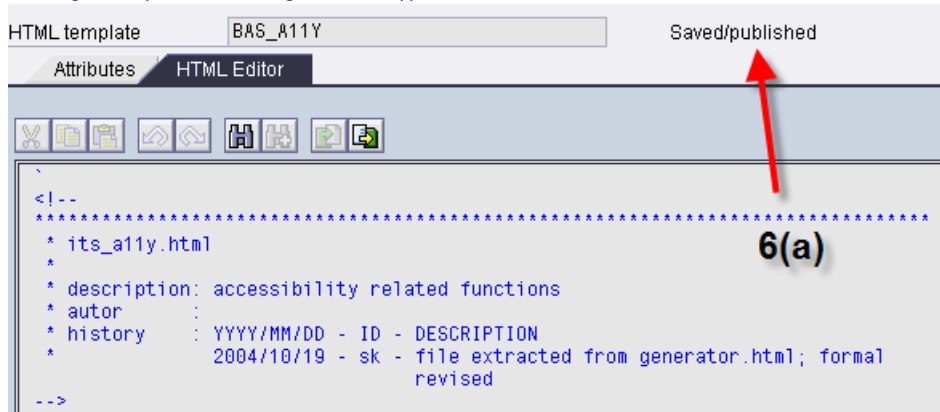
This shows that the WEBGUI was published to site "INTERNAL"(7) the 30th of March 2009 (8) at 15h59:37 (9). I have omitted the publishers name in this case.

**Do also the same for an individual templates to see if the publishing date matches**

Drill down the WEBGUI tree to one of the HTML templates and double click on the template. Step 5(a)

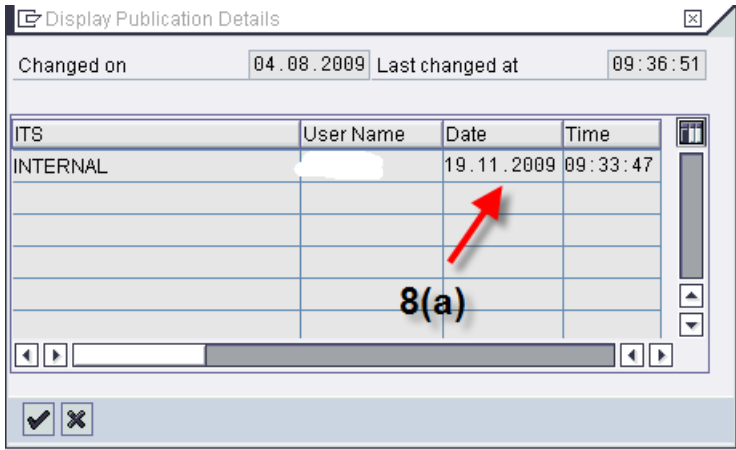


In the right hand panel the following screen will appear.



Then "Double Click" on the text "Saved" OR "Saved/Published". In this case it is "Saved/Published". Step 6(a).

In the resulting POP-UP you will obtain the publishing information for the template BAS\_A11Y(in this example) to site INTERNAL/Integrated ITS.

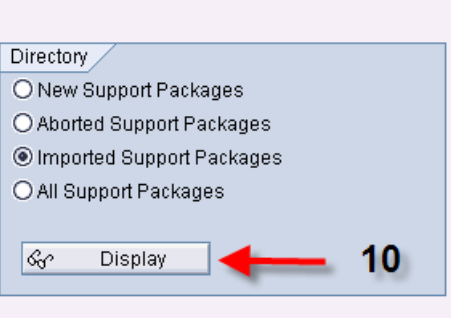


Does the publishing date differ from the WEBGUI folder(STEP 7,8,9)? YES it does in this case. Note the date and follow the next steps.  
 This shows that the template BAS\_A11Y was published to site "INTERNAL" Step 8(a) the 19th of November 2009 at 09h33:47.  
 I have omitted the publishers name in this case.

**Transaction SPAM**

Once the WEBGUI/ITS Service publishing date is known one can check if new SAP\_BASIS have been applied since the ITS Service was last published.

Call transaction SPAM. Select "Imported Support Packages". Click on Display (10)



On the resulting screen - the relevant information from an ITS Perspective is the importation of the SAP\_BASIS support package.

SAP_BASIS		SAP Basis Component	
▶	SAPKB70001	Basis Support Package 01 for 7.00	Imported on 19.05.2005 at 13:13:42
▶	SAPKB70002	Basis Support Package 02 for 7.00	Imported on 13.06.2005 at 13:17:17
▶	SAPKB70003	Basis Support Package 03 for 7.00	Imported on 25.07.2005 at 14:39:06
▶	SAPKB70004	Basis Support Package 04 for 7.00	Imported on 22.09.2005 at 14:10:12
▶	SAPKB70005	Basis Support Package 05 for 7.00	Imported on 19.12.2006 at 13:28:33
▶	SAPKB70006	Basis Support Package 06 for 7.00	Imported on 19.12.2006 at 13:28:34
▶	SAPKB70007	Basis Support Package 07 for 7.00	Imported on 19.12.2006 at 13:28:35
▶	SAPKB70008	Basis Support Package 08 for 7.00	Imported on 19.12.2006 at 13:28:36
▶	SAPKB70009	Basis Support Package 09 for 7.00	Imported on 19.12.2006 at 13:28:37
▶	SAPKB70010	Basis Support Package 10 for 7.00	Imported on 19.12.2006 at 13:28:38
▶	SAPKB70011	Basis Support Package 11 for 7.00	Imported on 14.08.2007 at 10:28:39
▶	SAPKB70012	Basis Support Package 12 for 7.00	Imported on 14.08.2007 at 10:28:40
▶	SAPKB70013	Basis Support Package 13 for 7.00	Imported on 25.09.2007 at 04:55:32
SAP_ABA		Cross-Application Component	
▶	SAPKA70001	ABA Support Package 01 for 7.00	Imported on 18.05.2005 at 08:31:23
▶	SAPKA70002	ABA Support Package 02 for 7.00	Imported on 13.06.2005 at 13:17:18
▶	SAPKA70003	ABA Support Package 03 for 7.00	Imported on 25.07.2005 at 14:39:06
▶	SAPKA70004	ABA Support Package 04 for 7.00	Imported on 22.09.2005 at 14:10:13

In this case, the last importation of a SAP\_BASIS Support Package into the WAS was Basis Support Page 13 and it was imported the 25th of September 2007. (11)

**Conclusion**

The ITS Service Webgui does not need to be republished as its publishing date is newer than the importation of the last SAP\_BASIS Support Package into the WAS.  
 We also know that the template BAS\_A11Y was published to site "INTERNAL" at a later date than the WEBGUI service.

This would indicate that this template was modified manually or via a note correction and was published on its own. It is always useful to check individual template dates as it maybe the case the template has an older publishing date than the general service folder. Step 5. If that is the case then we also need to check the date against the date of the last importation of a SAP\_BASIS Support Package into the WAS.

## Notes

If the service needs to be republished - please review the following ITS Howto: [How to activate, publish and test ITS services in the integrated ITS?](#)

### ITS 6.40

Please note that there is one special service for ITS 6.40. Service SYSTEM  
Service SYSTEM should always be published correctly - it is required  
by all services that make use of SAP Integrated ITS.

### ITS 7.00

Please note that there are two special services: SYSTEM and IAC.  
Service SYSTEM should always be published correctly - it is required  
by all services that make use of SAP Integrated ITS. Service IAC  
needs to be published if you want to use services other than WEBGUI  
(= SAP GUI for HTML).

[Contact Us](#) [Site Index](#) [Marketing Opportunities](#) [Legal Terms](#) [Privacy](#) [Impressum](#)  
[Powered by SAP NetWeaver](#)