

Configure System Connection in SAP Enterprise Portal



Applies to:

SAP Enterprise portal EP 5.0, 6.0, 7.0 and future releases. For more information, visit the [Portal and Collaboration homepage](#).

Summary

This article shows how to configure a SYSTEM CONNECTION from an SAP Enterprise Portal to a backend server (SAP or third party). For instance, in an Employee Self Service scenario, the portal would require a connection to the backend Human Resource Environment or in a Portfolio Management scenario there will be needed that a connection is setup to the backend PPM server.

Author: Hemanth Kumar

Company: SAP

Created on: 18 October 2009

Author Bio

Hemanth is a senior software engineer, working in SAP for the last 3½ years.

Table of Contents

Introduction	3
Procedure:	3
Navigation:	3
Configuring a system:	3
Step 1) Create a system	4
Step 2) Choose the type to connection	4
Step 3) save the system connection and now edit it so that the backend parameters can be maintained.....	5
Step 4) Maintain the WEB AS details	5
Step 5) Maintain the “connector” details.....	7
Step 6) Maintain Internet Transaction Server (ITS) settings (not mandatory) and Maintain the System Alias..	8
Step 7) Testing the System connection.....	9
Related Content.....	11
Copyright.....	12

Introduction

When data needs to be accessed from the backend servers, the SAP Basis Administrator /portal admin will create a “system alias” so that the portal components can reference these systems. They are a means of retrieving the information stored on database servers without having to know the name of the server. Once the system connection is setup, the developers can create iViews to connect to these applications and retrieve data from their information stores. In the portal, you can store all systems in one folder or place them anywhere within the Portal Catalog. Then the alias name can be passed over to the developers and they can create their own programs, referencing the system alias if data needs to be extracted from the backend.

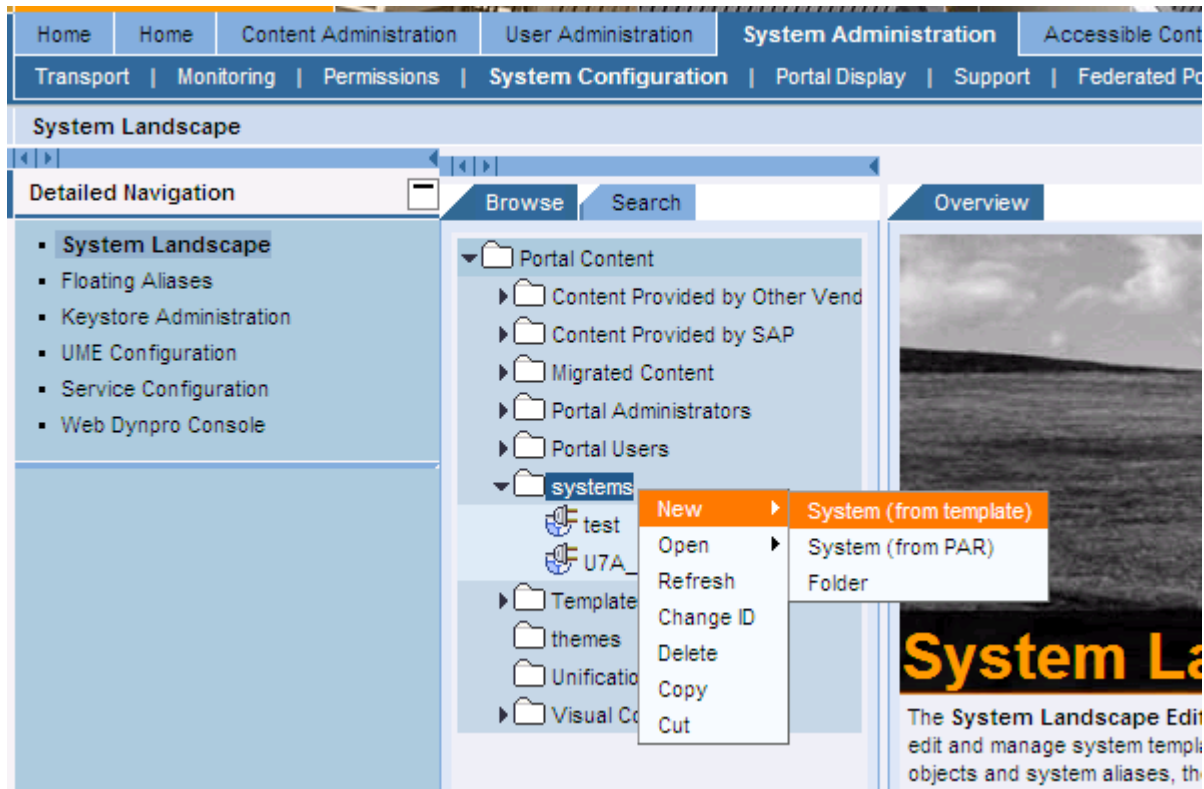
Procedure:

Navigation:

Go to Enterprise portal-> System Administration > System Configuration > System Landscape > Portal Content > Systems > [Create new system here]

Configuring a system:

Step 1) Create a system



Step 2) Choose the type to connection

System Wizard

Step 1:

Template Selection

This wizard guides you through the steps required to create a portal system based on a template and may need refreshing.

Choose Template: *

- BI JDBC System
- BI ODBO-Compliant OLAP System
- BI SAP Query System
- BI XMLA-Compliant OLAP System
- EP 5.0 System
- HTTP System
- JDBC System
- SAP system using connection string
- SAP system using dedicated application server
- SAP system with load balancing
- Web Service System using WSDL URL

If there is no load balancing needed, then dedicated connection too can be maintained

Step 2: General Properties

System Name: *
SystemConn_ERP

System ID: *
SystemConn_ERP

System ID Prefix (Example: com.companyname):
SystemConn_ERP

Master Language: *
English

Description:
NOTE: This is a system connection to a backend ERP server

Step 3) save the system connection and now edit it so that the backend parameters can be maintained

Overview SystemConn_ERP

Choose your next step:

- Open the object for editing
- Restart the wizard to create a new object using the same template
- Close the wizard

OK

Step 4) Maintain the WEB AS details.

Select "Web Application server (WAS)" from the "Property Category" drop-down box:

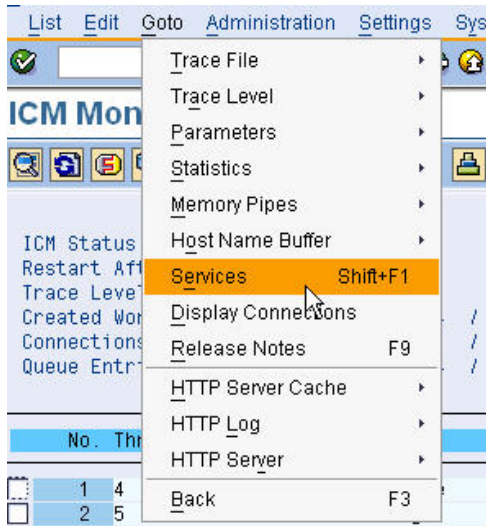
Property Category

- Web Application Server (WAS)
- Web Application Server (WAS)
- User Administration
- User Management
- ...

WAS Description: "SystemConn_ERP"

WAS Host Name:URL:Port:

To find the correct WAS Host name and port number, login to the R/3 system whose connection has to be maintained and goto the /n**SMICM**→ GoTo→ Services:



Active Services				
No.	Protocol	Service Name/Port	Host Name	
<input checked="" type="checkbox"/>	1	HTTP	50077	us4296.wdf.sap.corp
<input type="checkbox"/>	2	HTTPS	57701	us4296.wdf.sap.corp
<input type="checkbox"/>	3	SMTP	25077	us4296.wdf.sap.corp

→ in this example the **WAS Host Name** is “us4296.wdf.sap.corp”, the **http port number** is “50077” and the **https port number** is “57701”.

WAS Path: (can be blank)

WAS Protocol: http or https (depending on the request)

Enter all the values:

Save Close Preview Refresh Edit Mode Display: []

Property Editor - U7A_hemanth

Property Category: Web Application Server (Web AS)

▶ Web AS Description []

▶ Web AS Host Name us4296.wdf.sap.corp:50077

▶ Web AS Path /sap/bc/webdynpro

▶ Web AS Protocol http

Step 5) Maintain the “connector” details

Select “Connector” from the “Property Category” drop-down box:

Property Editor - SystemConn_ERP

Property Category:

▶ Group

▶ Logical System Name

▶ Message Server

▶ Remote Host Type

▶ SAP Client

▶ SAP System ID (SID)

▶ Server Port

▶ SNC Library Path

▶ SNC Mode

▶ SNC Name

▶ SNC Partner Name

▶ SNC QOP (Security Level)

▶ System Type

To find the above backend details:

- 1) **Group**->/nSMLG in the backend server

CCMS: Maintain Logon Groups

Icons: Delete Assignment Delete Gro

Logon Group	Instance	Status
PUBLIC	us4296_U7A_77	■
PUBLIC	usai1u7a_U7A_76	■
SPACE	usai1u7a_U7A_76	■

- 2) Logical system name-> /nSCC4 in the backed server. Make sure that you login to the correct backend client. Also if the logical server name is not maintained, then create one using /nSALE and to convert one, use /nBDLS.

Display View "Clients": Details

Client:	320	User Management Test 1
City	Walldorf	Last C
Logical system	U7ACLNT320	Date
Std currency	EUR	
Client role	Production	

3) Message server port

This can be found from the dev_ms file in the backend.

```
[Thr 1] ms/icf_info_server : deleted
[Thr 1] *** I listen to port sapmsU7A (15241) ***
[Thr 1] *** I listen to internal port 3977 (3977) ***
[Thr 1] *** HTTP port 8177 state LISTEN ***
[Thr 1] *** HTTPS port 44477 state LISTEN ***
```

4) System type should be "SAP_R3" or "SAP_BW" depending on the connection

Step 6) Maintain Internet Transaction Server (ITS) settings (not mandatory) and Maintain the System Alias.

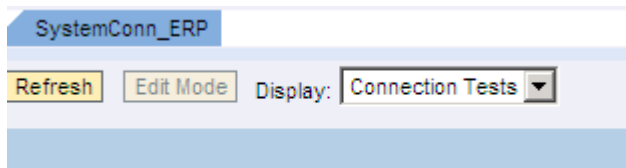
The screenshot shows the SAP Property Editor for the system 'SystemConn_ERP'. The 'Property Category' is set to 'Connector'. A dropdown menu is open, showing options: Object, Connection Tests, Permissions, Delta Link Tracer, and System Aliases. The 'System Aliases' option is highlighted.

Please note that the developers will be using the SYSTEM ALIAS to connect to the backend server. So this needs to be maintained properly and in line with SAP recommendations.

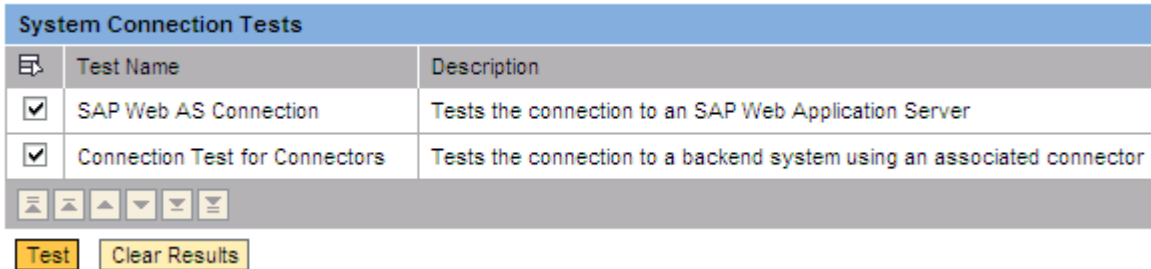
The screenshot shows the 'System Alias Editor' interface. It includes a text area for instructions, an 'Alias Name' input field with an 'Add' button, and a table of 'Defined Aliases'.

	Default	Alias Name
<input checked="" type="checkbox"/>	✓	SAP_ERP

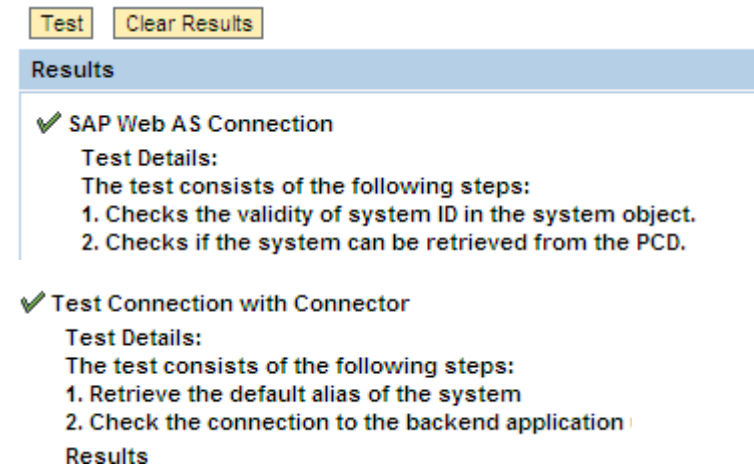
Step 7) Testing the System connection



Select the connections made and then click on “test”

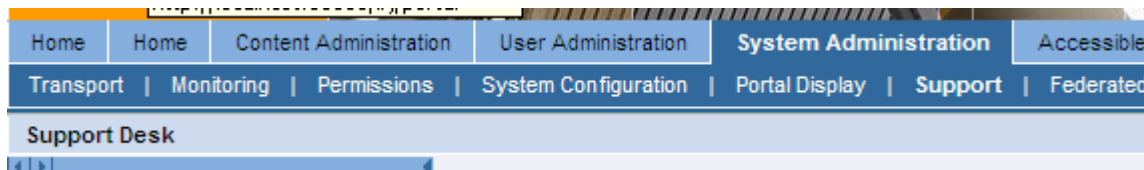


If the parameters maintained are correct, then the test should be fine



Another way to check will be to use the SYSTEM CONNECTION and try to login to the server

Go to Enterprise portal-> System Administration > Support



Click on SAP APPLICATION

Roles and Worksets	Editing roles and worksets, role migration
SAP Application	Integration of SAP applications and session management
SAP WebAS System Information	Find out about SAP WebAS Engine state and access log files
SAP Request Support	Messages from portal to a SAP Solution Manager system

Select SAP TRANSACTION

Test and Configuration Tools

Tool

Transaction

[SAP Transaction](#)

[DSM: Logger](#)

Now select the SYSTEM ALIAS, enter a TCODE to be navigated to in the backend (Message server monitor in this case)

MandatoryParameters	
System	<input type="text" value="SAP_ERP"/>
Transaction Code	<input type="text" value="SMMS"/>
SAP GUI Type	<input type="text" value="SAP GUI for Windows"/>

If the connection works fine, you should be able to see the backend screen from the portal now.

Server Name	Host Name	SAP Service
us4296_U7A_77	us4296	Dialog Batch
usai1u7a_U7A_76	usai1u7a	Dialog Batch

Related Content

SAP University course EP 200

http://help.sap.com/saphelp_nw04/helpdata/en/0d/17df3d2cae445ae10000000a11405a/frameset.htm

For more information, visit the [Portal and Collaboration homepage](#).

Copyright

© Copyright 2009 SAP AG. All rights reserved.

No part of this publication may be reproduced or transmitted in any form or for any purpose without the express permission of SAP AG. The information contained herein may be changed without prior notice.

Some software products marketed by SAP AG and its distributors contain proprietary software components of other software vendors.

Microsoft, Windows, Excel, Outlook, and PowerPoint are registered trademarks of Microsoft Corporation.

IBM, DB2, DB2 Universal Database, System i, System i5, System p, System p5, System x, System z, System z10, System z9, z10, z9, iSeries, pSeries, xSeries, zSeries, eServer, z/VM, z/OS, i5/OS, S/390, OS/390, OS/400, AS/400, S/390 Parallel Enterprise Server, PowerVM, Power Architecture, POWER6+, POWER6, POWER5+, POWER5, POWER, OpenPower, PowerPC, BatchPipes, BladeCenter, System Storage, GPFS, HACMP, RETAIN, DB2 Connect, RACF, Redbooks, OS/2, Parallel Sysplex, MVS/ESA, AIX, Intelligent Miner, WebSphere, Netfinity, Tivoli and Informix are trademarks or registered trademarks of IBM Corporation.

Linux is the registered trademark of Linus Torvalds in the U.S. and other countries.

Adobe, the Adobe logo, Acrobat, PostScript, and Reader are either trademarks or registered trademarks of Adobe Systems Incorporated in the United States and/or other countries.

Oracle is a registered trademark of Oracle Corporation.

UNIX, X/Open, OSF/1, and Motif are registered trademarks of the Open Group.

Citrix, ICA, Program Neighborhood, MetaFrame, WinFrame, VideoFrame, and MultiWin are trademarks or registered trademarks of Citrix Systems, Inc.

HTML, XML, XHTML and W3C are trademarks or registered trademarks of W3C®, World Wide Web Consortium, Massachusetts Institute of Technology.

Java is a registered trademark of Sun Microsystems, Inc.

JavaScript is a registered trademark of Sun Microsystems, Inc., used under license for technology invented and implemented by Netscape.

SAP, R/3, SAP NetWeaver, Duet, PartnerEdge, ByDesign, SAP Business ByDesign, and other SAP products and services mentioned herein as well as their respective logos are trademarks or registered trademarks of SAP AG in Germany and other countries.

Business Objects and the Business Objects logo, BusinessObjects, Crystal Reports, Crystal Decisions, Web Intelligence, Xcelsius, and other Business Objects products and services mentioned herein as well as their respective logos are trademarks or registered trademarks of Business Objects S.A. in the United States and in other countries. Business Objects is an SAP company.

All other product and service names mentioned are the trademarks of their respective companies. Data contained in this document serves informational purposes only. National product specifications may vary.

These materials are subject to change without notice. These materials are provided by SAP AG and its affiliated companies ("SAP Group") for informational purposes only, without representation or warranty of any kind, and SAP Group shall not be liable for errors or omissions with respect to the materials. The only warranties for SAP Group products and services are those that are set forth in the express warranty statements accompanying such products and services, if any. Nothing herein should be construed as constituting an additional warranty.